

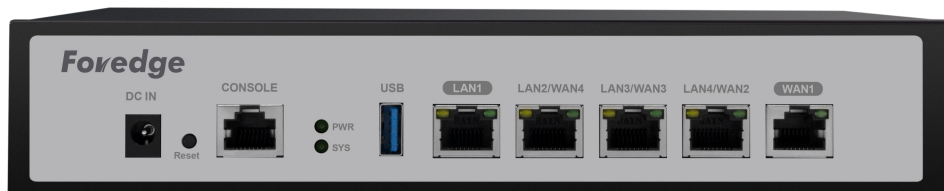
5 -port Gigabit small business-class converged gateway Built-in wireless controller AC100

Product Brochure

Shenzhen Fengrunda Technology Co., Ltd

Product Introduction :

- small and medium- sized enterprise gateway based on the CAPWAP protocol .
- The product is equipped with 1 Gigabit WAN port, 3 WAN/LAN ports and 1 LAN port, and has multiple WAN features such as WAN port load balancing, multi-operator access, line backup, network overlay, policy routing, etc.
- Supports intelligent flow control, Internet behavior management, network firewall, VPN settings, remote access control management and other functions.
- A maximum of 128 terminal users are allowed to access the network, providing high-speed network, maximum protection against network storms, and ensuring normal operation of the network.
- It can be used as the main router in the network or as a bypass AC, managing and configuring 128 thin APs. It can also be remotely managed and maintained in the later stage. Even in different cities and different networks, administrators can monitor, manage and configure the AC100 home page at any time. The product has the characteristics of high performance, easy installation and easy maintenance, which greatly saves the manpower and material costs in network layout.
- AC100 can be used as an authentication gateway to access the cloud platform to implement authentication methods such as advertising authentication, user authentication, and SMS authentication.
- The product is widely used in small and medium-sized enterprises, hotels, shops, Internet cafes, shopping malls and other places.



Product Features :

1. Multi-WAN and multi-WAN port load balancing

- AC100 supports PPPoE/DHCP/static IP/PPTP access, and supports access to multiple operators' telecom, Unicom, and mobile lines.
- Supports multiple WANs, supports multiple WAN port load balancing, line backup, network overlay and other functions to provide users with a more stable and faster network.
- AC100 supports policy routing based on IP address, MAC address, network interface, domain name and other rules.

2. AP management functions

➤ Zero configuration and grouping

Before accessing the wireless AP, add a zero-configuration group. The wireless AP will automatically get the corresponding configuration from the group without additional configuration. It is simple and convenient. You can also add different groups in the entire network, and then send the configuration data to the wireless AP in the corresponding group.

➤ Built-in intelligent channel analyzer

AC100 has a built-in intelligent channel analyzer to help wireless AP detect and analyze the channels of surrounding wireless network sources, so that the wireless AP can select the channel with the least interference and achieve the most stable wireless coverage.

➤ Automatically assign IP addresses to wireless APs

AC100 has a built-in DHCP server that automatically assigns IP addresses to wireless APs, avoiding the possibility of IP address conflicts and saving labor configuration costs.

3. authentication

- In gateway mode, AC100 supports multiple authentication methods, such as account and password authentication, user authentication, SMS authentication, etc., making the entire network layout more professional and bringing more advertising effects.

4. Intelligent flow control

- One-key intelligent flow control
 - The simple and worry-free intelligent flow control function can be turned on with just one switch.
 - Based on traffic size and traffic feature recognition technology, as well as algorithms for handling fairness and controlling network delays.
 - It takes into account the surfing experience of downloading, video and game web pages, with fast downloading, stable game delay and fast web pages.
- Powerful multi-line shunting
 - Supports access and distribution of up to 180 external network lines on a single machine.
 - Supports two types of traffic diversion: IP diversion and session diversion, with bandwidth superposition and no disconnection.
 - The process is diverted, and the diversion is clean and thorough.
 - Powerful diversion rules based on IP address, time, port, routing table, application, and diversion weight can meet various diversion needs.

4. Intelligent flow control

- Automatically apply priority
 - When bandwidth is limited, application priority is given to games and web applications, and no matter how many P2P downloads there are, it will not affect the user's Internet experience.
- Policy bandwidth control
 - The maximum flow of a specific user on each line can be precisely limited according to IP address, authenticated user, user level, user part and time conditions.
- Connection number control
 - The maximum number of TCP and UDP connections for a specific user can be precisely limited based on IP address, authenticated user, user level, user part, and time conditions.
- Powerful firewall and user management
 - The 7-layer firewall module can configure release or organization policies based on address, user, level, department coordination time, destination address, and destination port.
 - Policy control can be performed on specified applications, specified ports, and specified external network lines.
 - There are also port mapping, source address translation, and intranet DDOS protection functions.
 - The IP-MAC binding function prevents intranet ARP attacks.
 - You can view the QQ numbers that are logged in on the intranet, and control whether a specified QQ number can be passed.

5. Others

- AC100 supports real-time network speed monitoring, VPN, static IP, DDNS, etc.

Hardware specifications:

Hardware specifications	
model	AC100
CPU	MT7621AT
DDR	512MB
Flash	16MB
Heat dissipation	Natural cooling
interface	WAN : 1 × 1GbE RJ45 port
	LAN : 4 × 1GbE RJ45 ports (3 can be configured as multi -WAN)
	1 × Console port
	1 × USB3.0 port
power supply	DC 12V
size	232.5 *152.5 *44.5mm
Operating temperature	-20°C ~ 55°C
Storage temperature	-40°C ~ 70°C
Operating humidity	5% ~ 97%RH (No condensation)

Software Specifications:

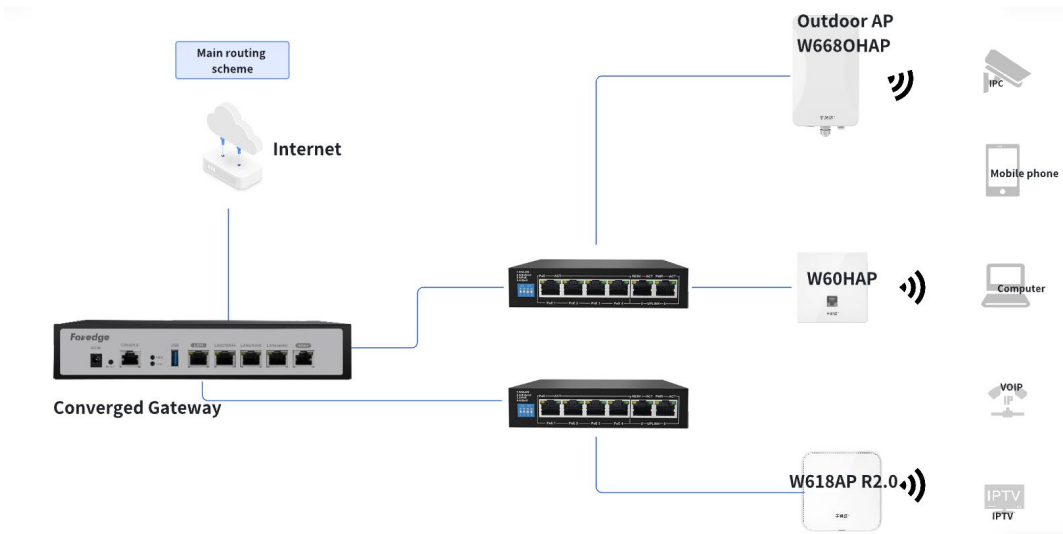
Software Specifications	
AP Management	Maximum number of managed users: 128 users
	Number of APs managed: 128
	Centralized and remote management, configuration of wireless APs
	View user status
Intelligent flow control	One-click intelligent flow control
	Powerful multi-line splitting
	Automatically apply priority
Load Balancing	Multiple WANs, multiple carriers access
	Intelligent load balancing
	Line backup
	Network speed superposition
	Policy routing: based on source IP address, destination IP address, source MAC address, network interface, domain name, destination port, external network interface, identity binding and other policies
	Protocol Binding
	Online detection
Routing	Static Routing
Behavior	Completely block P2P software
	P2P flow control and bandwidth allocation
	File transfer and URL filtering
	Comprehensive control of online behavior

Software Specifications:

Software Specifications	
Bandwidth Control	IP-based bandwidth control
	Guaranteed/limited bandwidth
	Time strategy
	IP-based session restriction
Security Center	MAC address filtering
	URL/Keyword filtering
	Web Content Filtering
	IP Address Filtering
	Port forwarding
	DMZ
Defense Center	TCP/UDP/ICMP flood defense;
	Block TCP Scans
	Block PING WAN port
ARP detection	Sending GARP Packets
	ARP scan of WAN/LAN ports
	IP-MAC binding
Certification	Local authentication (SMS authentication, user authentication)
	Remote authentication (SMS authentication, user authentication)
manage	Web/CLI/Telnet management portal
	Remote authentication (SMS authentication, user authentication)
other	DDNS, VPN management

Networking Application:

Routing Network:



AC Networking:

